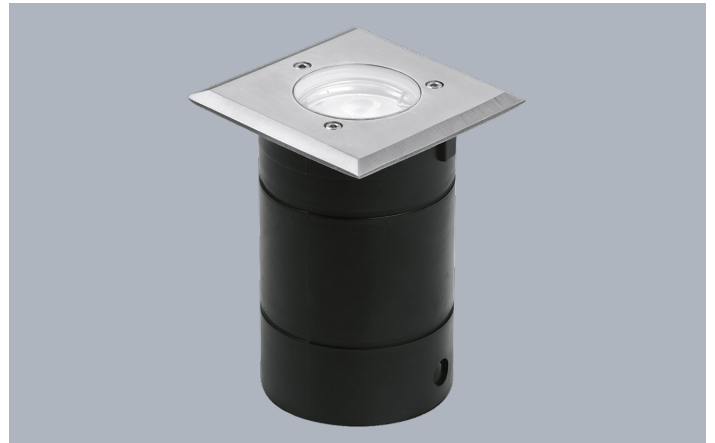


**Product Description:**

Discreetly recessed, this professional IP65 walkover has loop-in loop-out connection for quick and easy installation. It can be used in-ground and in patios for domestic and commercial applications. Available in round or square.

**Product Image:**

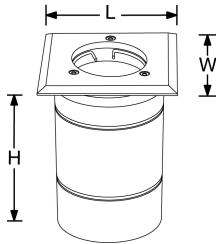


G-Lite™ PRO GU10 IP65 Square Walkover

**Product Features:**

- IP65 304 Stainless Steel walkover light, supplied with clear and optional frosted cover glasses
- 316 bezel accessory available
- Cut-out 76mm without mounting sleeve (supplied). Cut-out 84mm with mounting sleeve
- For use with GU10 lamps - lamps not included (Max 50W lamp)
- 3 year warranty

**Line Drawing Image**



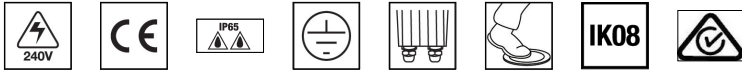
**Product Specs:**

Technology	LED	Input Voltage	~240V
Dimmable	No	IP Rating	IP65
IK Rating	IK08	Fire Protection	No
Recess Depth (mm)	130	Cutout Diameter (mm)	76
Lamp Base	GU10	Height (mm)	100
Length (mm)	100	Width (mm)	100


**SKU Table and Ordering**

SKU Code	EN-WU022SS
----------	------------

## Compliance & Approvals:



## Accessories:

SKU Image	SKU Code	Description
	EN-WUBZ22	G-Lite™ PRO 316 Stainless Steel Square Bezel Accessory for EN-WU022SS

## Warranty

This product has a warranty period of 3 Years. Warranties are valid from the date of purchase. The warranty is invalid in the case of improper use, installation, tampering, removal of the Q.C. date label or installation in an improper working environment or installation. Should this product fail during the warranty period it will be replaced free of charge, subject to the correct installation of the original product and subsequent return of the faulty unit. Aurora does not accept responsibility for any installation costs associated with the replacement of this product and Aurora reserves the right to alter specifications without prior notice.

**UK Enlite Sales & Distribution**  
Apex Park  
6 Little Burrow  
Welwyn Garden City AL7 4SW  
United Kingdom  
Tel : +44 (0) 1707 35 18 20