

# NEW AND IMPROVED

# FlameGuard<sup>®</sup> system

# BACK BOX

Flameguard back boxes offering peace of mind in the event of fire.

Durable all steel construction

Multiple cable entry points available

In the event of a fire, the intumescent layer within the box expands as the temperature increases filling the metal box cavity.

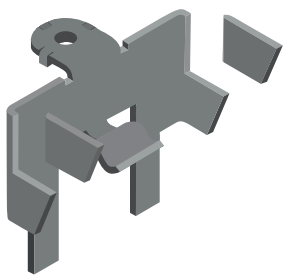
47mm depths.

Earth terminal fitted.

Unique spring loaded lugs.

No additional components to purchase or install.

As simple and quick to install as a standard cavity wall box, saving time and money.



Now with second pair of gripping arms.

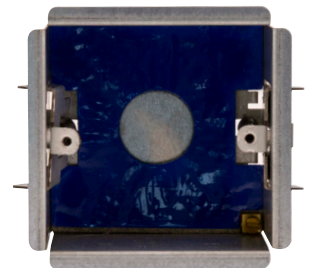
Maximum board thickness of 30mm

Arms are designed to easily break off with pliers.



**WA4247**

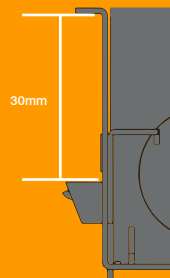
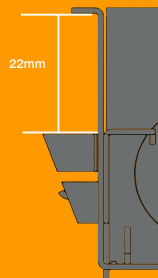
Available in 1 gang and 2 gang



**WA4147**

FlameGuard back boxes have been tested and conform to both fire and acoustic BS EN standards  
 Fire: BS EN 1363-1: 1999 & BS EN 1364-1: 1999  
 Acoustic: BS EN ISO 10140-2: 2010 & BS EN ISO 717-1: 1997  
 Complies with Building Regulations.  
 Fire tested up to 90 minutes with the capability of the boxes being mounted back to back.

**CLICK<sup>®</sup>**  
 electrical accessories



Upper tabs work from 5mm to 22mm

With the upper tabs removed, the Lower tabs work from 15mm to 30mm