



MiniGrid Plate Switches (Modular)



The smooth modern lines of the Definity accessory plate will fit easily into traditional and contemporary designs alike.

Definity Screwless switches are developed largely as a modular range based on the large selection of switch modules available in the CLICK MINIGRID Module range. Simple, single screw fixing of modules offers the simplest possible means of installing and replacing modules.

MiniGrid Plate Switches (Modular)

Product Range

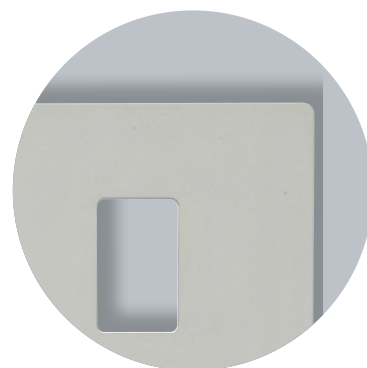
Finish Comparison



Brushed Steel (BS)



Matt Black (BK)



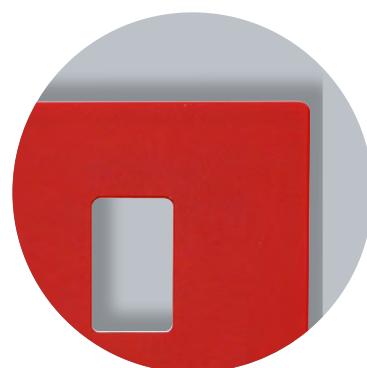
Polar White (PW)



Polished Chrome (CH)



Stainless Steel (SS)



Red (RD)

MiniGrid Plate Switches (Modular)

Product Range

MiniGrid Plate Switch Inserts (Modular)

| | |
|-----------------|------------------------------------|
| SIN401** | Single Insert Single Aperture |
| SIN402** | Single Insert Twin Aperture |
| SIN403** | Single Insert Triple Aperture |
| SIN404** | Double Insert (2 x 2) Aperture |
| SIN406** | Double Insert (2 x 3) Aperture |
| SIN426** | Double Insert (6 In-line) Aperture |



SIN401BK



SIN402PW



SIN403BK



SIN404PW



SIN406BK



SIN426PW

Errors & Omissions excluded. Specification is subject to change without notice. ** Denotes Insert Colour

V1.0

Scolmore International Ltd, 1 Scolmore Park, Landsberg, Lichfield Road Ind. Estate, Tamworth, Staffordshire, B79 7XB

Telephone: 01827 63454

E-mail: sales@scolmore.com, technical@scolmore.com

Facsimile: 01827 63362

Website: www.scolmore.com

MiniGrid Plate Switches (Modular)

Product Range

MiniGrid Plate Switch Cover Plates

| | |
|-----------------|---|
| SCP401## | Single Cover Plate Single Aperture |
| SCP402## | Single Cover Plate Twin Aperture |
| SCP403## | Single Cover Plate Triple Aperture |
| SCP404## | Double Cover Plate (2 x 2) Aperture |
| SCP406## | Double Cover Plate (2 x 3) Aperture |
| SCP426## | Double Cover Plate (6 In-line) Aperture |



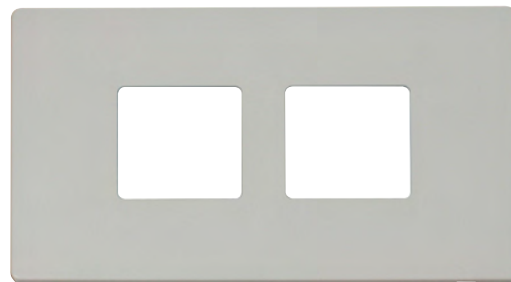
SCP401RD



SCP402BS



SCP403CH



SCP404PW



SCP406SS



SCP426BK

Errors & Omissions excluded. Specification is subject to change without notice. ## Denotes Cover Plate Finish

V1.0

Scolmore International Ltd, 1 Scolmore Park, Landsberg, Lichfield Road Ind. Estate, Tamworth, Staffordshire, B79 7XB

Telephone: 01827 63454

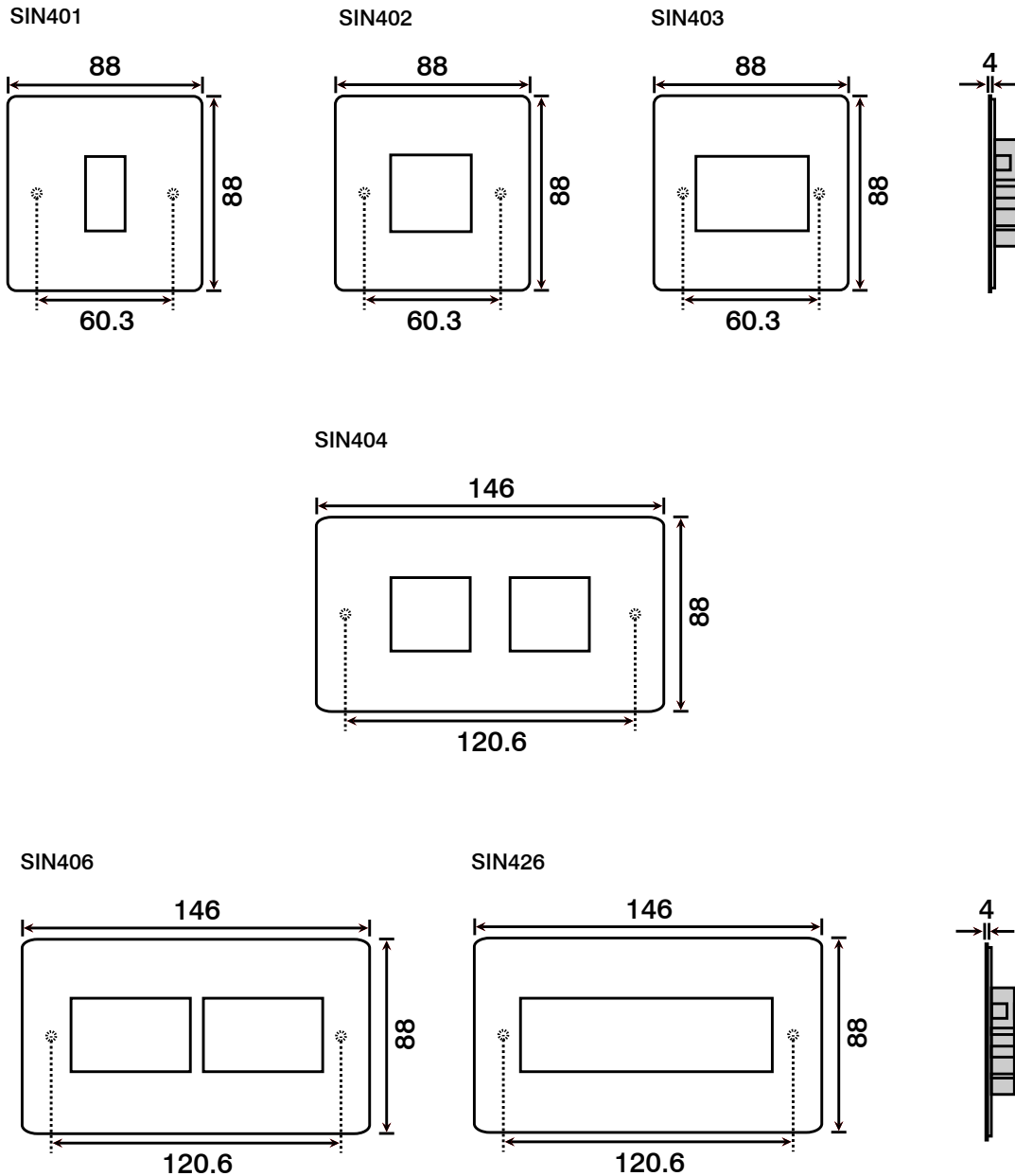
E-mail: sales@scolmore.com, technical@scolmore.com

Facsimile: 01827 63362

Website: www.scolmore.com

MiniGrid Plate Switches (Modular)

Product Dimensional Drawings (mm)



Errors & Omissions excluded. Specification is subject to change without notice.

V1.0

Scolmore International Ltd, 1 Scolmore Park, Landsberg, Lichfield Road Ind. Estate, Tamworth, Staffordshire, B79 7XB

Telephone: 01827 63454

E-mail: sales@scolmore.com, technical@scolmore.com

Facsimile: 01827 63362

Website: www.scolmore.com

MiniGrid Plate Switches (Modular)

Technical Specification

MiniGrid Plate Switches (Modular)

| | |
|--------------------------------|--|
| Material Composition | Insert: Polycarbonate |
| | Earth Terminal: Brass |
| | Earth Strap: Mild Steel |
| | Cover Plate: Coated Stainless Steel or Polycarbonate (PW & BK) |
| Cable Size | Dependent on modules fitted |
| Back Box Depth | Dependent on modules fitted |
| Modular | Yes |
| Warranty | 10 Years |
| IP Rating | IP20 |
| Operational Temperature | -5° to +40°C |
| Standards | BS 5733 : 2010 + A1 : 2014 |

Additional Information

Ensure that the mains supply is isolated before commencing installation and refer to the circuit diagram with the relevant product.

Bare earth cables must always be covered with appropriate sleeving and wired to the earth terminal.

Interchangeable with switches in the MINIGRID system.



DECLARATION OF CONFORMITY

1. *Issuer Name* Scolmore International Limited
2. *Issuer Address* 1 Scolmore Park, Landsberg,
Lichfield Road Industrial Estate,
Tamworth, Staffordshire, B79 7XB
3. *Object(s) of Declaration* Definity Range
 - a. *Group* Modular Switch Plates (Unfurnished)
 - b. *Model No.* SIN401, SIN402, SIN403, SIN404, SIN406, SIN426
4. *The object of the declaration described above is in conformity with the requirements of the following Legislations:*
5. *All products contained within the aforementioned comply with the relevant standards and requirements listed below.*

BS 5733 : 2010 + A1 : 2014

6. *I hereby declare that the equipment named above has been designed to comply with the relevant sections of the above referenced specifications. The unit complies with all applicable Essential Requirements of the Directives.*

In conjunction with the above all manufacture and process controls are in accordance with ISO 9001:2008

Signed, for and on behalf of: Scolmore International Limited



Steven Bettson BSc - Senior Technical Support Engineer

