



6A 4 PIN QUICK CONNECT CEILING ROSE

FEATURES

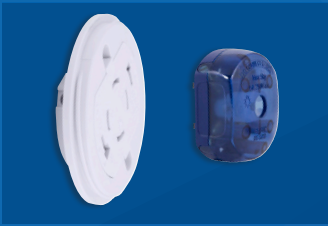
- Can be used for 3 & 4 Pole Requirements; including emergency lighting circuits
- Quickly and safely connect / disconnect luminaire to ceiling rose for fast installation & maintenance
- Suitable for BESA box mounting

Scolmore[®]
GROUP

01827 63454 | sales@scolmore.com
www.scolmore.com



HOW IT WORKS



Step 1 - Insert the Plug into the Socket Base ensuring the pins are aligned with the corresponding markings on both the Plug & Socket Base.



Step 2 - Once inserted, the plug will be in an unlocked state and be positioned diagonally with the centre of the Socket Base.



Step 3 - Turn the Plug 1/8 turn clockwise to connect & lock into place.



Step 4 - Slide the Ceiling Rose cover onto the Socket Base and ¼ turn clockwise to secure.

APPLICATIONS



PRC1440

6A 4 Pin Quick Connect Ceiling Rose, Plug & Cover



PRC1440RD

Red 6A 4 Pin Quick Connect Ceiling Rose, Plug & Cover



PRODUCT SPECIFICATION

Dimensions	70mm Diameter x 43mm Depth
Base Mount Dimensions	50.8mm (Standard diagonal for BESA Box Fixing)
Material Composition	Housing Material: Polycarbonate Cable Grip: Nylon Contacts & Terminals: Brass Screws: Steel
Rated Voltage	250V~
Current Rating	6A
Maximum Mechanical Load	5Kg
Terminations	4 (Live, Neutral, Earth & Loop)
Terminal Capacity	2 x 1.5mm ² Max
Connector	4 Pin Plug Supplied (PRC1420)
Mounting Method	Suitable For Besa Box Mounting
IP Rating	IP20
Ambient Temperature	+5C - +40C
Standards	BS 6972: 1988 & BS 5733: 2010