

**AquIP**66™

IP66 Weatherproof Sockets & Switches

---

**CLICK**®  
●●●●● ScolmoreGROUP

# AQUIP<sup>66</sup>™ IP66 Weatherproof Switches

## Robust Construction

- Polycarbonate construction
- High impact resistance
- UV protected against fading
- Ergonomic Design
- Smooth operation of switches
- Neutral modern design suitable for most locations
- Flexible rubber base allows for mounting on most types of uneven surfaces

## Multiple Gland Entry Position

- Multiple knockouts (20mm) for entry from all angles

## Weatherproof - IP66

- Offers high level of protection against ingress of water jets and dust

## Multiple Switch Configurations

- Designed to fit any MiniGrid modules (13A Max)



**OA411AG**

**1 Gang 2-way**

**Weatherproof Switch**

Fitted with a 2-way Minigrd module



**OA412AG**

**2 Gang 2-way**

**Weatherproof Switch**

Fitted with 2 x 2-way  
Minigrd modules

**OA401AG**

**1 Gang Weatherproof  
Switch Enclosure**

Modules supplied separately

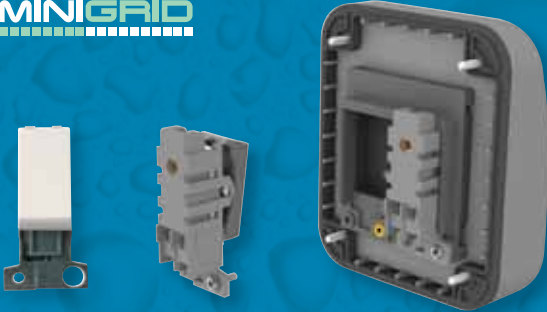
**OA402AG**

**2 Gang Weatherproof  
Switch Enclosure**

Modules supplied separately



**CLICK**<sup>®</sup>  
MINIGRID



**Interchangeable modules**



**OA035AG**

**1 Gang Weatherproof Socket**

Fitted with a 1 gang Mode switched socket.



**OA036AG**

**2 Gang Weatherproof Socket**

Fitted with a 2 gang Mode switched socket.

**OA501AG**

**1 Gang Weatherproof Unfurnished Enclosure**

**OA502AG**

**2 Gang Weatherproof Unfurnished Enclosure**

United Kingdom

**CLICK**<sup>®</sup>  
●●●●● ScolmoreGROUP

Scolmore Park, Landsberg,  
Lichfield Road Industrial Estate,  
Tamworth, Staffordshire  
B79 7XB United Kingdom

T: +44 (0)1827 63454  
F: +44 (0)1827 63362  
E: sales@scolmore.com

[www.scolmore.com](http://www.scolmore.com)

Southern Ireland

**CLICK**<sup>®</sup> Litehouse

Unit 56/61, Newtown Business  
& Enterprise Centre,  
NewtownMountKennedy,  
Co.Wicklow, Ireland

T: +353 (1) 2811 122  
F: +353 (1) 2811 224  
E: sales@clicklitehouse.ie

[www.clicklitehouse.ie](http://www.clicklitehouse.ie)

MAR7020