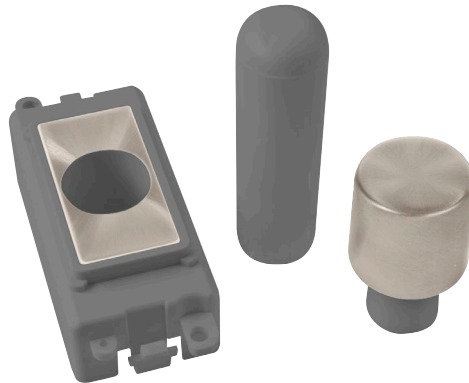


Technical Specification

Product Code: GM050GYBS

Description: 1 Module Dimmer Mounting Kit



General Information

Dimensions (mm)	24.5 (W) x 50 (H)	
Finish	Brushed Stainless	
Insert Colour	Grey	
Materials	Body & Insert: Nylon	Control Button: Nylon
	Insert & Control Button Covers: Stainless Steel	
Anti Microbial Certified	No	
Minimum Back Box Depth (mm)	47	
Ingress Protection	IP20	
Operational Temperature (°C)	-5 to +40	
Warranty (Years)	10	

Additional Information For cleaning / polishing of products, use only a soft, dry, clean cloth. Ensure that the mains supply is isolated before commencing installation and refer to the circuit diagram with the relevant product. Bare earth cables must always be covered with appropriate sleeving and wired to the earth terminal.

Compatible Dimmer Modules MD9014: 100W Dual Mode LED Dimmer Module
 MD9001: 6A Push ON/OFF (Dummy Dimmer / Non Dimmable) Module
 MD9010: 1-10V Analogue Rotary Dimmer Module
 MD9022: 40-250W Leading Edge Dimmer Module
 MD9042: 60-400W Leading Edge Dimmer Module

UK Patent: GB 2578427UK Design Registration: 3015621

