

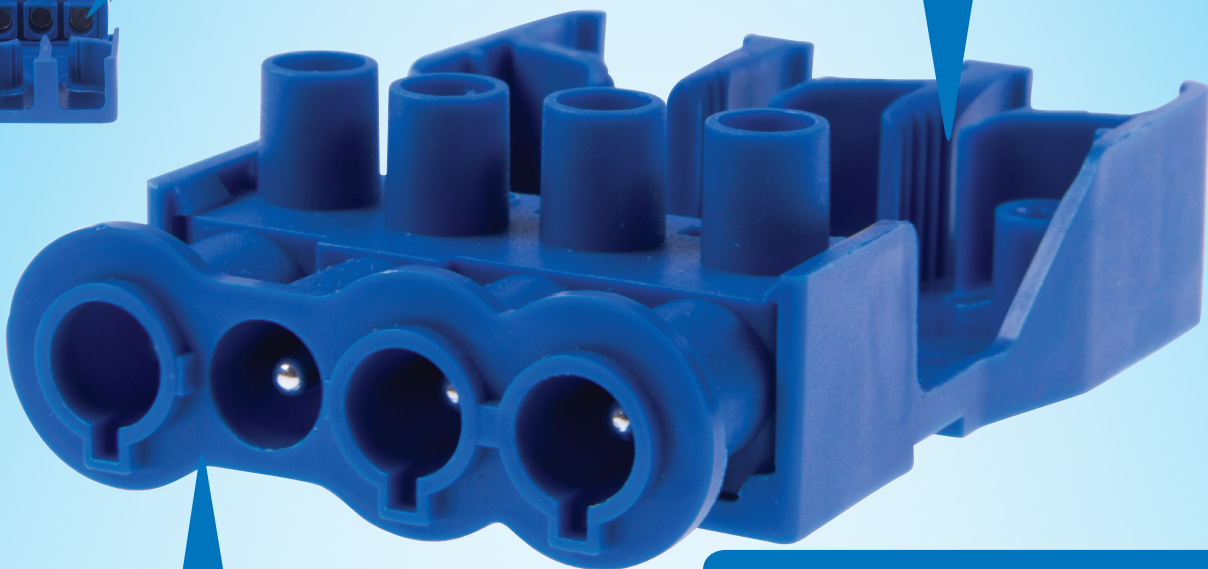
# Why Choose CLICK?

**We recognise that your time is money, our Plug-in Flow connector gives you easy access with large terminals and fast connection.**

Terminal screws are supplied backed-off so conductors can be inserted straight into the terminal before tightening the screw.

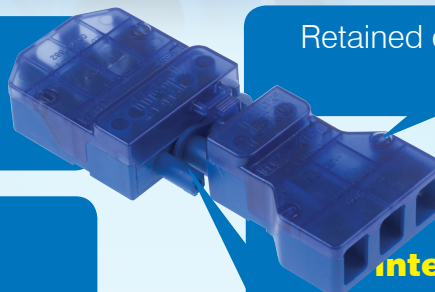


The new Flow connectors feature **screwless** cable clamps so no additional time is needed to restrain the cable.



Flow connectors feature a rib which **prevents misconnection** of Live and Neutral pins.

The **superior latching** mechanism means that even if the two parts are not aligned perfectly, it will always latch.



All current Flow connectors are rated at **20A**.

Retained cover screws are released in one 90 degree turn.

All Flow connectors are **interchangeable** with 3 and 4 pin versions working together all of the time.