

The all in one Junction Box and Connection System



Designed initially for lighting circuits to enable isolation of transformers, control gear etc. whilst conducting the 1000V Insulation Resistance Test.

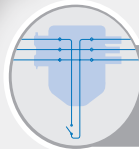
NEW



CT1300

Easily adds a switched live into a Click Flow circuit

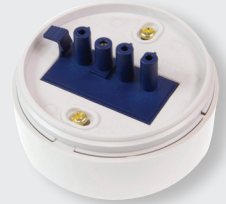
- Quick release lockable covers
- A quick and easy solution - use with the link cables overleaf for easier installation



CT1300 is pre-wired with earth and neutral links.

CT1400

250V 20A Click Flow Ceiling Rose



CT1401

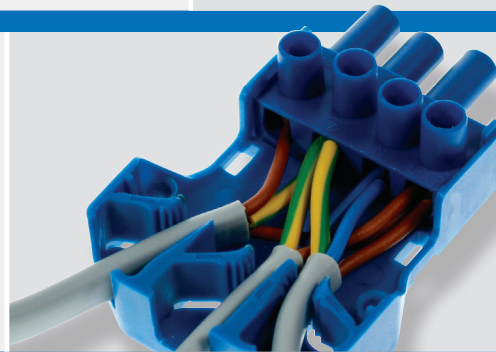
Click Flow Ceiling Rose Cover

(Not suitable for use with CT103 / CT203)



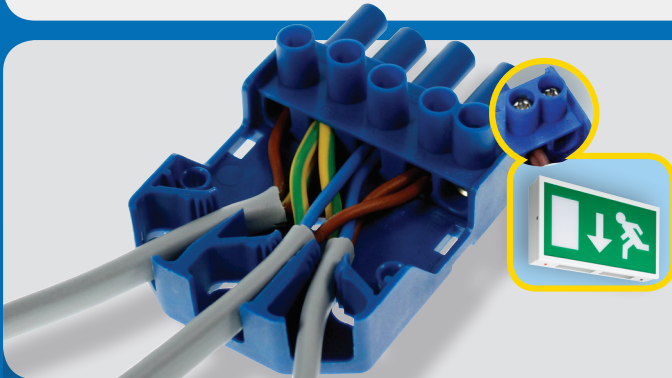
CT103C

- Fast fit cable clamps
- Quick release lockable covers
- 3 Pin Plug-in Connector with loop terminal. Cable grips for where the installation limits the fixing of the connector



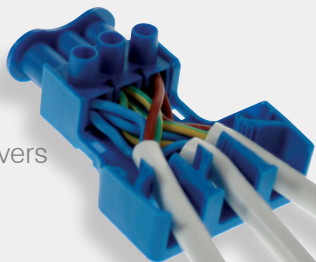
CT203C

- Fast fit cable clamps
- Quick release lockable covers
- 4 pin Plug-in Connector with Auxiliary terminals
- Auxiliary provides the opportunity for a second switched live or permanent feed for use typically with emergency lighting applications



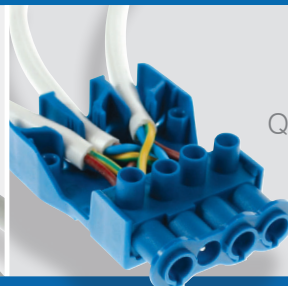
CT103M

- Fast fit cable clamps
- Quick release lockable covers
- Single male connector



CT203M

- Quick release lockable covers
- Fast fit cable clamps
- Single male connector



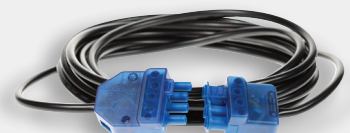
Link Cables with the CT202C pre-wired.



2m CT802



3m CT803



5m CT805

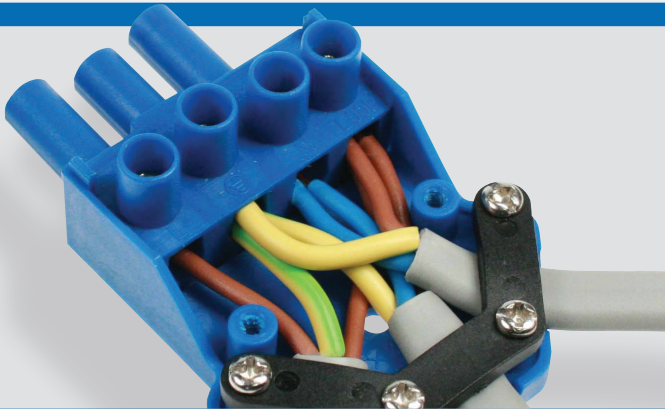
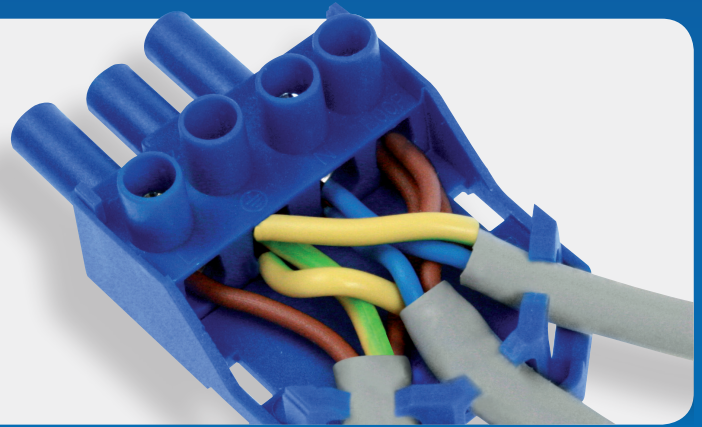
The all in one Junction Box and Connection System



- 250V~ 20A Plug-In Connector
- Terminal screws supplied raised
- Versatile, easy-connection system
- Large terminals with easy access
- Easy lock and release mechanism

CT101C

- Increased load handling with 20A rating
- Male: Max 1.5mm² 3 core cable;
Female: Max 3 x 2.5mm² twin and earth (with additional loop terminal)
- Also available on a range of FlameGuard downlighters
- Replaces the CT100C

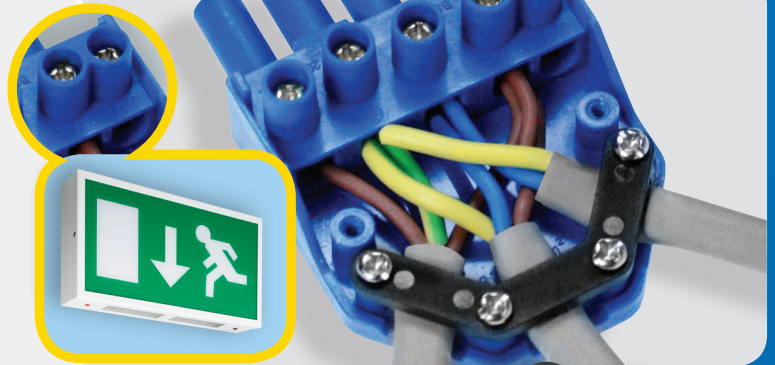


CT102C

- 3 Pin Plug-in Connector with loop terminal. Cable grips for where the installation limits the fixing of the connector
- Cord restraint is fitted within the male connector

CT202C

- 4 pin Plug-in Connector with Auxiliary terminals
- Auxiliary provides the opportunity for a second switched live or permanent feed for use typically with emergency lighting applications



CT300 - The Hub

- One Hub can be connected directly to another or via the link cables
- A quick and easy solution when adding lighting or appliances to an existing FLOW circuit (can be linked up to 20A)

