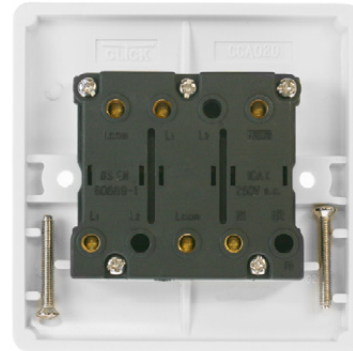


Product Code: CCA021

Description: 10A 3 Pole Isolation Plate Switch



General Information

Plate Dimensions (mm)	86 (W) x 86 (H) x 9.5 (D)	
Plate Fixing Centres - Horizontal (mm)	60.3	
Style	Rounded Profile	
Finish	Polar White	
Materials	Front Plate & Rocker Switch: Urea	Rear Housing: Nylon
	Terminals: Brass	Terminal Screws: Steel & Yellow Passivated
	Contacts: Silver "on-lay" Copper / Brass	Internal Busbars: Formed Pressed Brass
Anti Microbial Certified	Yes	
Rated Voltage (V~) (Ue)	250	Frequency (Hz) 50
Resistive Load Rating (A)	10	
Termination Type	Screw	
Terminal Size (mm)	Ø3.5	Terminal Torque Value (Nm) 0.5
Terminal Capacity - Solid (mm²)	4 x 1.5 or 2 x 2.5	
Modular Rocker Switches	No	
Triple Pole Switch	Yes	
Minimum Back Box Depth (mm)	16	
Ingress Protection	IP20	
Operational Temperature (°C)	-5 to +40	
Warranty (Years)	10	
Standards	BS EN 60669-2-4 BS EN 60669-1	

Additional Information

Ensure that the mains supply is isolated before commencing installation and refer to the circuit diagram with the relevant product.

Bare earth cables must always be covered with appropriate sleeving and wired to the earth terminal.

All white moulded accessories are manufactured using Urea Formaldehyde, which has similar inherent properties to antimicrobial additives that inhibit the growth of infectious diseases as well as anti-viral properties against enveloped and non-enveloped viruses.

All products have been independently tested with 99.9% of enveloped viruses and 92% of non-enveloped viruses killed off whilst achieving a 99.9% kill rate across all four types of the strains of bacteria - MRSA, E-Coli, Salmonella, and Klebsiella Pneumoniae.