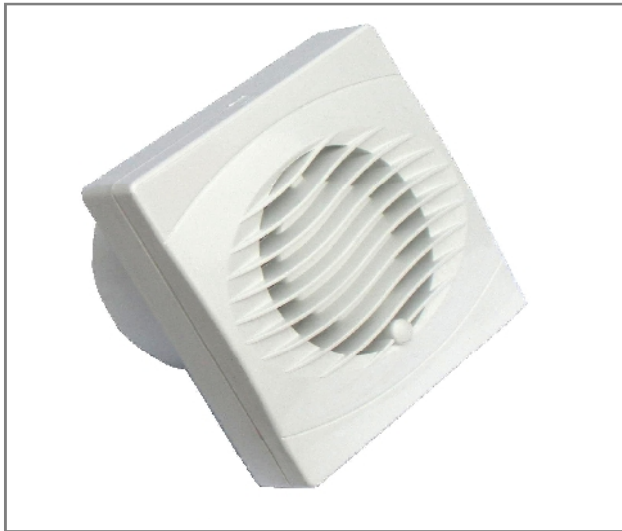


Budget BVF 100mm (4") Range



- Quiet and efficient, the 100mm (4") series has an impressive extract rate of 85m³/hr, 23 litres per second, and is available in the ten options detailed opposite.
- The units are all manufactured using high ABS thermoplastics for strength and durability, aesthetics and easy cleaning.
- Power is provided by a single phase induction motor with pre-oiled bearings for a long, maintenance-free life.

IP Rating of IP44 which is equal to IPX4

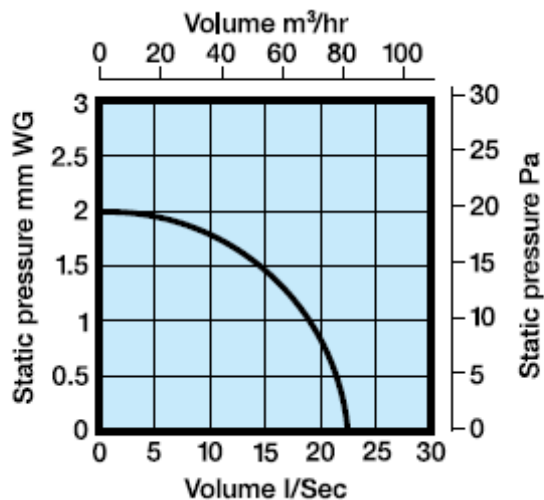
Technical Details

Cat. No. Product type
100mm (4") Wall/ceiling Fans

BVF100S	Standard Extractor Fan
BVF100P	As above supplied with Pullcord switch
BVF100T	Timer model incorporating integral adjustable electronic timer (1-20mins)
BVF100H	Humidity control which is adjustable between 40% RH and 95% RH Complete with integral adjustable timer (1-20mins)
BVF100HP	As above with pullcord override switch. Requires no switched live

Performance Graph

85m³/hr, 23 l/s



Electrical

220-240V - AC. 50Hz Single phase consuming 14 watts. These fans are double insulated and do not require an earth. All wiring must comply with current IEE regulations. A double pole isolating switch, having a contact separation of at least 3mm in all poles, must be used with a 3 amp fuse fitted. The fan must not be accessible to a person using either the shower or bath and mounted a minimum of 1.8 metres from the floor.

Additional Data

100mm (4") Range

Maximum pressure: 20 p.a.
Fan speed: 2400 r.p.m.
Sound volume: 41.0 dB(A)
Maximum operating temperature: 40°C.

