

Unable to Run Switch Wiring? EasySwitch is the Answer



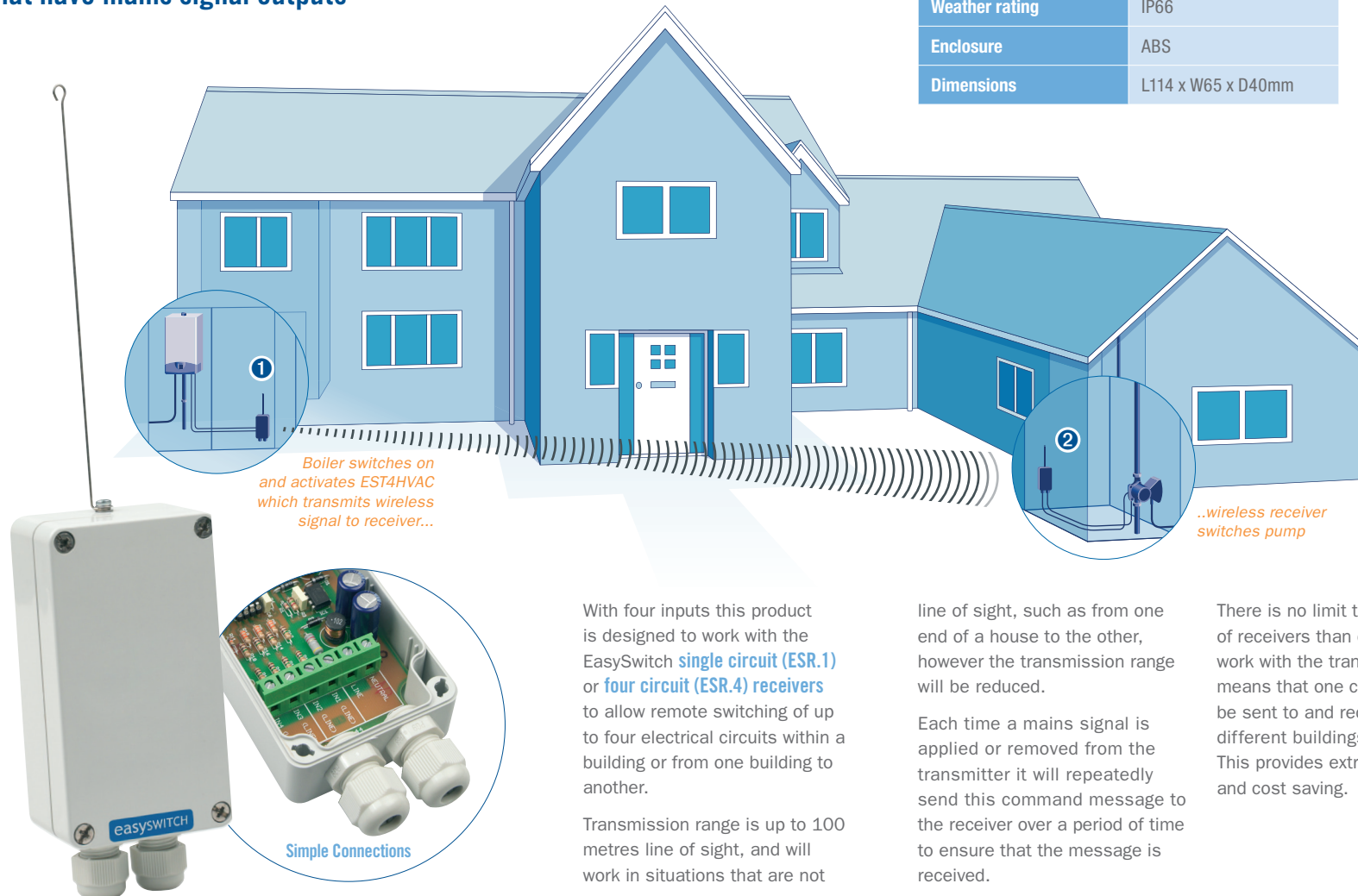
Introducing EasySwitch,
the wireless switching solution



The New EST4HVAC Wireless Transmitter

Specially designed for retro control of HVAC systems the EST4HVAC is the ideal wireless solution where mains cabling is difficult or impractical.

This model is mains voltage powered and designed so that it can easily interface to various control devices that have mains signal outputs



Specifications

Supply	220-240V 50Hz
Power consumption	0.1W
Transmission range	100 metres line of sight
Frequency	433.92Mhz FM
Inputs	4
Input voltage	220-240V 50Hz
Temperature range	-10°C to +60°C
Weather rating	IP66
Enclosure	ABS
Dimensions	L114 x W65 x D40mm

Products used in this scenario

Wireless Transmitter



- IP66 weatherproof rating
- Powered by 220-240 volt 50Hz
- Ultra low power consumption
- Up to 4 mains inputs
- Compatible with all Easyswitch products.

Single Circuit Switching Receiver



- IP66 weatherproof rating
- 240V and 12V versions
- suitable for loads up to 1KW
- can be used with 1-16 transmitters.

With four inputs this product is designed to work with the EasySwitch **single circuit (ESR.1)** or **four circuit (ESR.4)** receivers to allow remote switching of up to four electrical circuits within a building or from one building to another.

Transmission range is up to 100 metres line of sight, and will work in situations that are not

line of sight, such as from one end of a house to the other, however the transmission range will be reduced.

Each time a mains signal is applied or removed from the transmitter it will repeatedly send this command message to the receiver over a period of time to ensure that the message is received.

There is no limit to the number of receivers than can be made to work with the transmitter which means that one command could be sent to and received in two different buildings or places. This provides extreme versatility and cost saving.

Also suitable for lighting control...

See back page for details of all the other products available in the EasySwitch Range.

EasySwitch Range

Wireless Switching Transmitter



- does not require any cabling
- uses 3 x AAA alkaline batteries
- switch up to four circuits
- fits into standard back box or 35mm flush mounted box
- for use with 1–4 gang switches
- up to 100 metre range.

Wireless Key Fob Transmitter



- compatible with all receivers
- single or four circuit version
- may be used individually or in conjunction with EST.1 transmitters and ESD detectors/transmitters
- up to 100 metre range.

PIR Detector/Transmitter



- battery operated
 - 2 year battery life
 - IP65 weatherproof rating
 - up to 100m transmitter range
 - adjustable timer (5 sec to 30 min)
 - 3 detection patterns available*
- * Please see website for detection patterns

Wireless Transmitter



- IP66 weatherproof rating
- Powered by 220-240 volt 50Hz
- Ultra low power consumption
- Up to 4 mains inputs
- Compatible with all Easyswitch products.

Single Circuit Switching Receiver



- IP66 weatherproof rating
- 240V and 12V versions
- suitable for loads up to 1KW
- can be used with 1–16 transmitters.

Four Circuit Switching Receiver



- IP66 weatherproof rating
 - 220–240V supply
 - 4 independent 16 amp relays
 - control up to 4 circuits
 - can be used with 1–16 transmitters.
- * Includes ESF.4 four button key fob

Mix and match products to create your perfect system. Please visit www.luminite.co.uk for further information



Mains Operated Plug-in Bleeper



- 5 second audible bleep
- works with PIR detector or key fob
- day, night or day and night modes.

Plug-in Remote Control Socket



- instant wireless remote switch
- compatible with all transmitters
- ideal for operating table lamps and other plug-in appliances.



Luminite Electronics Ltd, 2a Bellevue Road, Friern Barnet, London N11 3ER
 t: +44 (0) 20 8368 7887 f: +44 (0) 20 8368 3952 e: info@luminite.co.uk