

IP65 RECTANGULAR BULKHEADS

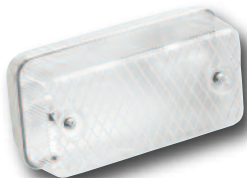
- Max wattage 100W
- Choice of Aluminium or Polycarbonate Body
- Suitable for LED lamps
- Energy Saving
- Zero maintenance
- Suitable for wall or ceiling mounting



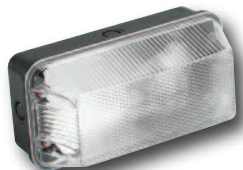
ENERGY1P



ENERGY2P



POLY



POLYP



POLYR

	ENERGY1P	ENERGY2P	POLY	POLYP	POLYR
Product Finish	Aluminium/ Polycarbonate	Aluminium/ Polycarbonate	Aluminium/ Polycarbonate	Polycarbonate	Aluminium/ Polycarbonate
Description	1 x 9W PL Energy Saving Bulkhead	2 x 9W PL Energy Saving Bulkhead	B22 Bulkhead	B22 Bulkhead	B22 Bulkhead
Product Dimensions	H130 x W240 x D100mm		H130 x W240 x D100mm	H120 x W240 x D130mm	H130 x W240 x D100mm
Product weight	951g	964g	609g	600g	600g
Barcode	5012739611063	5012739611070	5012739609107	5012739609114	5012739609121
IP Rating	IP65				
Lamp Type	Requires G23 2 pin PL Lamps (not supplied)		B22, GLS (not supplied)		
Voltage	230V AC ~ 50Hz				
Max Wattage	9W	18W	100W		
Class	1				
F Marked	Suitable for installation onto normal flammable surfaces				
Main housing material	Clear Diffuser & Non-corrosive Aluminium Body	Clear Diffuser & Non-corrosive Aluminium Body	Anti-Vandal Polycarbonate, Clear Diffuser & Non-corrosive Aluminium Body	Polycarbonate Clear Diffuser and Black Polycarbonate Body	Anti-Vandal Polycarbonate, Red Diffuser and Non-corrosive Aluminium Body
Guarantee	1 Year				
Certification & Conformity	EN 60598-2-1				