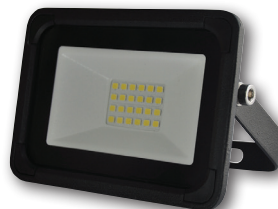


LED SLIMLINE FLOODLIGHTS

6,500K & 3,000K



- + IP65
- + Slimline design
- + Die-casting aluminium and tempered glass
- + Lower energy alternative
- + 7 wattage options available in 2 colour temperatures
- + 8 PIR options available (see overleaf)



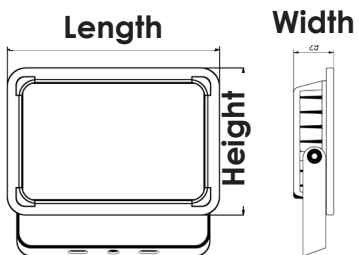
10W



30W



150W



	LEDFL10BWW	LEDFL10B	LEDFL20BWW	LEDFL20B	LEDFL30BWW	LEDFL30B	LEDFL50BWW	LEDFL50B	LEDFL100BWW	LEDFL100B	LEDFL150BWW	LEDFL150B	LEDFL200BWW	LEDFL200B
LED Power Consumption	10W		20W		30W		50W		100W		150W		200W	
Barcode	5012739 647628	5012739 647383	5012739 647635	5012739 647390	5012739 647642	5012739 647406	5012739 647659	5012739 647413	5012739 647666	5012739 647420	5012739 647673	5012739 647437	5012739 647680	5012739 647444
Colour	Black													
Power Rating	200-240V AC ~50Hz													
Colour Temp	3,000K	6,500K	3,000K	6,500K	3,000K	6,500K	3,000K	6,500K	3,000K	6,500K	3,000K	6,500K	3,000K	6,500K
Class	1													
IP Rating	IP65													
Switch Cycle	100,000													
Temp Range	-20°C - +45°C													
Lead length	0.9 Metre													
Total Lumens	900 (90 lm/W)		1800 (90 lm/W)		2700 (90 lm/W)		4500 (90 lm/W)		8000 (80 lm/W)		12,000 (80 lm/W)		16,000 (80 lm/W)	
Beam Angle	120°													
Product Weight	274g		411.5g		591.5g		1027g		1997g		3137g		4522.5g	
Dimensions L x H x W	115 x 80 x 25mm		150 x 104 x 29mm		180 x 125 x 32mm		233 x 160 x 40mm		318 x 227 x 53mm		380 x 266 x 55mm		460 x 321 x 55mm	
Life Span	35,000hrs													
Guarantee	2 Years													
Conforms To	BS EN 60598-2-5													



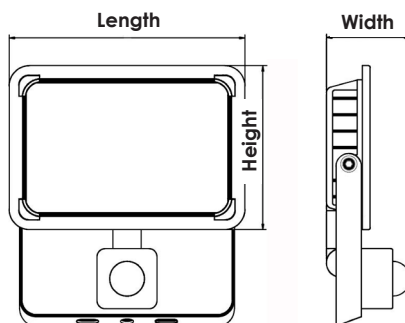
Tel: 01279 772 772
 Fax: 01279 422 007
 Email: sales@greenbrook.co.uk
 www.greenbrook.co.uk

LED SLIMLINE FLOODLIGHTS with PIR

6,500K & 3,000K



- + IP65*
- + Slimline design
- + Manual override
- + Die-casting aluminium and tempered glass
- + Lower energy alternative
- + 4 PIR options available in 6.500K or 3,000K



	LEDFLPIR10BWW	LEDFLPIR10B	LEDFLPIR20BWW	LEDFLPIR20B	LEDFLPIR30BWW	LEDFLPIR30B	LEDFLPIR50BWW	LEDFLPIR50B
LED Power Consumption	10W		20W		30W		50W	
Barcode	5012739 647697	5012739 647451	5012739 647703	5012739 647468	5012739 647710	5012739 647475	5012739 647727	5012739 647482
Colour	Black							
Power Rating	200-240V AC ~50Hz							
Colour Temp	3,000K	6,500K	3,000K	6,500K	3,000K	6,500K	3,000K	6,500K
Class	1							
IP Rating	IP65 (PIR IP44)							
Switch Cycle	100,000							
Temp Range	-20°C - +45°C							
Lead length	0.9 Metre							
Total Lumens	900 (90 lm/W)		1800 (90 lm/W)		2700 (90 lm/W)		4500 (90 lm/W)	
Beam Angle	120°							
Detection Distance	2 to 10 metres							
Time Delay	5 secs to 6 mins							
Mount Height	1.8 to 2.5 metres							
Product Weight	325.5g		456.5g		637g		1064g	
Dimensions L x H x W	115 x 80 x 54mm		150 x 104 x 54mm		180 x 125 x 54mm		233 x 160 x 55mm	
Life Span	35,000hrs							
Guarantee	2 Years							
Conforms To	BS EN 60598-2-5							



Tel: 01279 772 772

Fax: 01279 422 007

Email: sales@greenbrook.co.uk

www.greenbrook.co.uk

*Fitting IP65 - PIR IP44

Rev2-16.12.20