

## DATA SHEET: TEMBREAK 2 S400-CJ MCCB

MCCB Electrical Characteristics to IEC 60947-2, EN 60947-2, JIS C 8201-2-1 ANN.1, AS/NZS 3947-2, NEMA AB-1

Frame Reference	Quantity	Unit	Condition	TB2 E/S 630
<b>Max In (A) of Frame</b>				<b>630</b>
Model				S400
Number of Poles				3, 4
Type				CJ
<b>Nominal current ratings</b>				
	$I_n$	(A)	50°C	250 400
<b>Electrical characteristics</b>				
Rated operational voltage	$U_e$	(V)	AC 50/60 Hz DC	690 250
Rated insulation voltage	$U_i$	(V)		800
Rated impulse withstand voltage	$U_{imp}$	(kV)		8
Ultimate breaking capacity (IEC, JIS, AS/NZS)	$I_{cu}$	(kA)	690V AC 525V AC 440V AC 400/415V AC 220/240V AC 250V DC	15 22 30 36 50 40
Service breaking capacity (IEC, JIS, AS/NZS)	$I_{cs}$	(kA)	690V AC 525V AC 440V AC 400/415V AC 220/240V AC 250V DC	15 22 30 36 50 40
Rated breaking capacity (NEMA)		(kA)	480V AC 240V AC	22 50
Rated short-time withstand current	$I_{cw}$	(kA)	0.3 Seconds	-
<b>Protection</b>				
Adjustable thermal, adjustable magnetic				■
Fixed thermal, fixed magnetic				
Microprocessor				
Utilisation category				A
<b>Installation</b>				
Front connection (FC)				■
Extension bar (FB)				•
Cable clamp (FW)				•
Rear connection (RC)				•
Plug-in (PM)				•
DIN rail mounting (DA)				-
Dimensions	height	(mm)		260
	width	(mm)	3 pole	140
		(mm)	4 pole	185
	depth	(mm)		103
Weight	weight	(kg)	3 pole	4.3
			4 pole	5.6
<b>Operation</b>				
Direct Opening Action				■
Toggle operation				■
Door mounted (HS) / Breaker mounted handle (HB)				•
Motor operation (MC)				•
Endurance	Electrical	cycles	415V AC	4,500
	Mechanical	cycles		15,000

■ Standard    • Optional    - Not Available

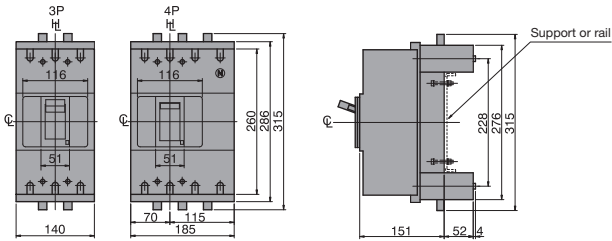


# DATA SHEET: TEMBREAK 2 S400-CJ MCCB

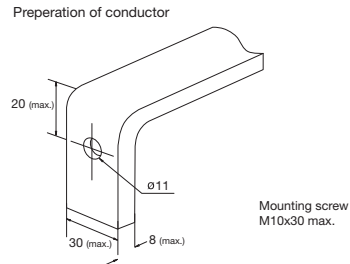
## Outline Dimensions S400-CJ Plug-in Version

ASL: Arrangement Standard Line  $\overline{HL}$ : Handle Frame Centre Line

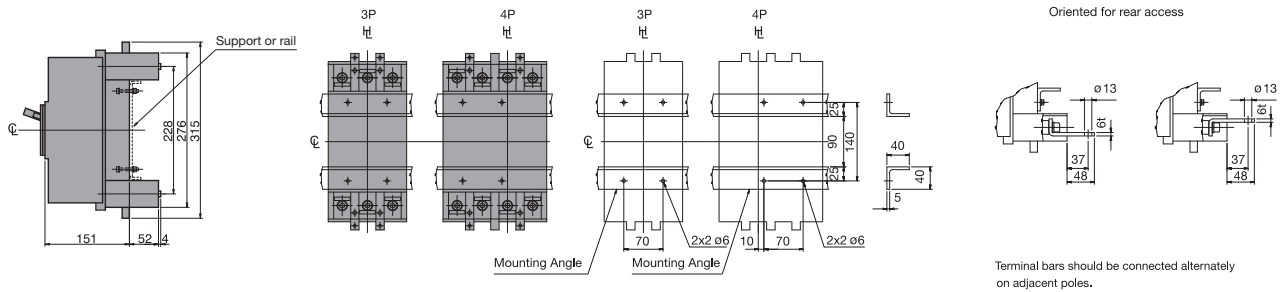
### Outline Dimensions



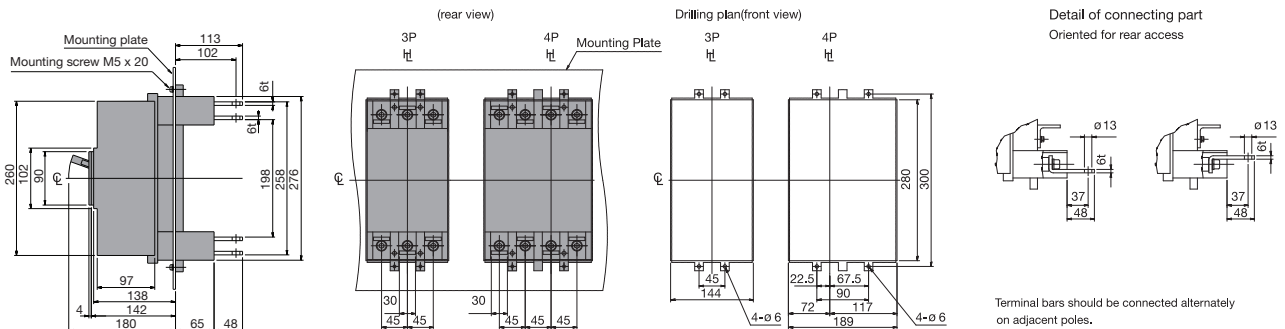
### Termination of Busbar



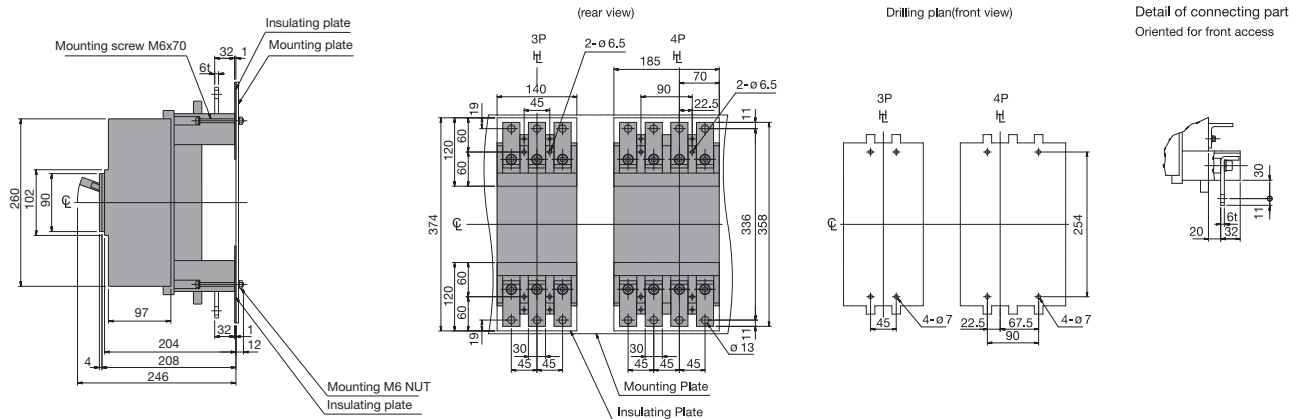
### Mounting on a support or rails (shown with optional connection bars oriented for rear access)



### Mounting through the backplate (shown with optional connection bars oriented for rear access)



### Mounting on the backplate (optional connection bars must be oriented for front access)



## DATA SHEET: TEMBREAK 2 S400-CJ MCCB

### Time/Current Characteristic Curve S400-CJ

