



MATTIRA COMBI

*Digital Modulating Electric Boiler,
for heating and domestic hot water*



MAC15
Wall mounted

Features

Heating boiler made of insulated steel.

Modulating electronic control of the heater by **SEM system** (Smart Electronic Modulating system).

50L DHW tank made of insulated stainless steel, CFC free.

Stainless steel shielded elements - INCOLOY800 for heating and DHW.

6L heating expansion vessel.

2L DHW expansion vessel.

Modulating electronic control of the heater.

Pressure gauge 0-4bar.

Circulating pump.

Auto air vent.

Silent TRIAC power switches.

Auto Heating Regulation mode.

Heating flow detector.

Heating temperature limiter 100°C.

DHW temperature limiter 80°C.

Heating 3 bar relief valve.

DHW 7 bar relief valve.

Also suitable for use with under floor heating.

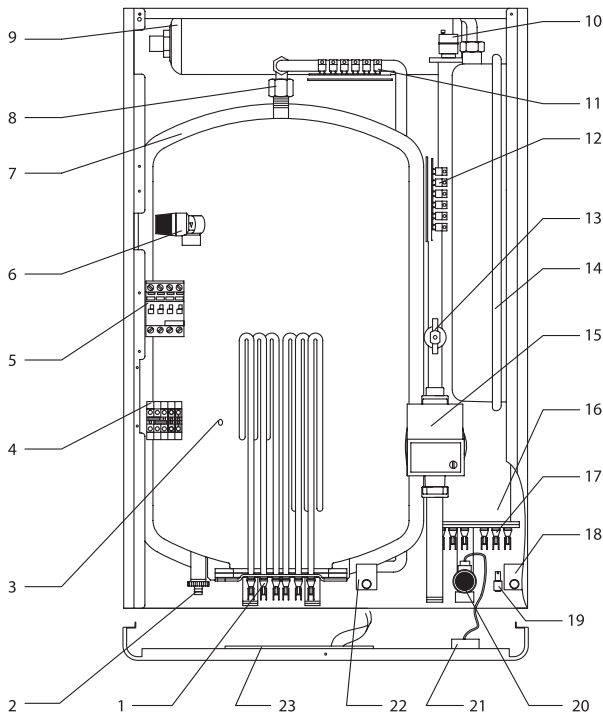
DHW anti-electrolysis hoses.

Powder coated RAL 9010.

Wall bracket steel template to set up connections easily.

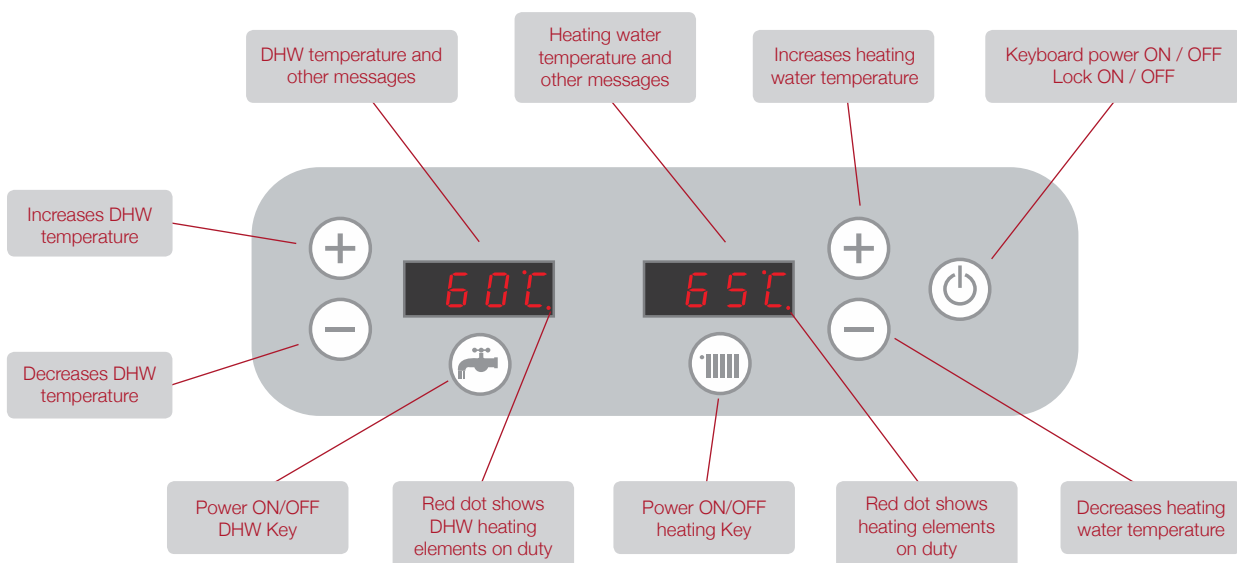
Compatible with Ambient Thermostats TA4D, CTP10, X3D and the Elnur Connected range of internet thermostats, all available as accessories.

Main Components



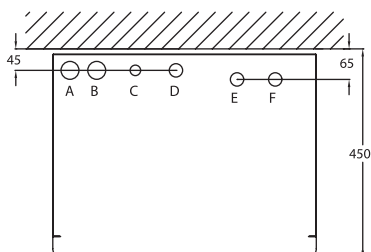
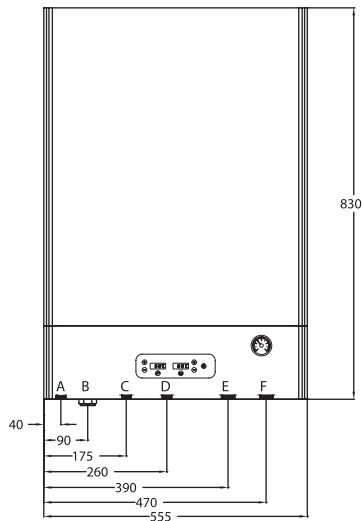
- 1 DHW resistance.
- 2 Drain valve.
- 3 Temperature sensor location.
- 4 Connection block.
- 5 Main contactor.
- 6 DHW 7 bar relief valve.
- 7 Insulated tank 50L.
- 8 Anti-electrolysis DHW hose.
- 9 DHW expansion vessel 3L.
- 10 Automatic purge.
- 11 DHW power electronic PCB.
- 12 Heating power electronic PCB.
- 13 Heating flow detector.
- 14 Heating expansion vessel 6L.
- 15 Circulation pump.
- 16 Insulated heating header tank.
- 17 Heating resistance.
- 18 Heating safety thermal limit switch.
- 19 ON/OFF switch.
- 20 Heating 3 bar relief valve.
- 21 Pressure gauge.
- 22 DHW safety thermal limit switch.
- 23 Main electronic PCB.

Control panel





Technical Specifications



Wall mounted

MATTIRA COMBI MAC15

*Digital Modulating Electric Boiler,
for heating and domestic hot water*

Dimensions and connections:

- A - Safety valve drain DHW
- B - Electrical connection
- C - Cold water input 1/2"
- D - DHW outlet 1/2"
- E - Heating flow 3/4"
- F - Heating return 3/4"

“Trust Mattira and feel the comfort of a safe and reliable digital electric boiler at home.”



MODEL	MAC15												
Selectable output	kW	3	4	5	6	7	8	9	10	11	12	13	15
kcal/h	kcal/h	2580	3440	4300	5160	6020	6880	7740	8600	9460	10320	11180	12900
Current 3x400 V+N~	L1 A	13.0	0	8.7	8.7	8.7	13.0	13.0	13.0	21.7	8.7	21.7	21.7
	L2 A	0	8.7	13.0	8.7	13.0	8.7	13.0	8.7	13.0	21.7	21.7	21.7
	L3 A	0	8.7	0	8.7	8.7	13.0	13.0	21.7	13.0	21.7	13.0	21.7
*Current 230 V~	A	13.0	17.4	21.7	26.1	30.4	34.8	39.1	43.5	47.8	52.2	Ask	Ask
**DHW Recovery time	min	29'04"	21'48"	17'26"	14'32"	12'27"	10'54"	9'41"	8'43"	7'56"	7'16"	6'42"	5'49"

*Using included bridge connection

**Recovery time in minutes to heat DHW from cold to 55°C.

MODEL	MAC15	
Voltage	V	3x400 V+N / 220-240
Frequency	Hz	50-60
Insulation		Class I
Net Weight	kg	61
EAN 13		84032336807244