



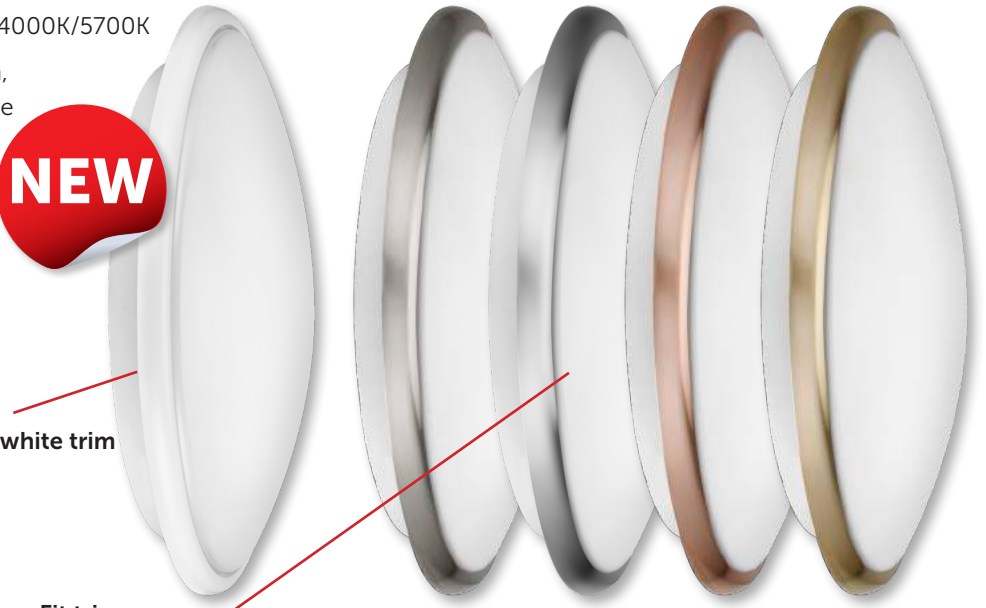
Deco grande LED Bulkhead

- Selectable colour temperature 3000K/4000K/5700K
- Supplied with white trim, chrome, satin, copper and antique brass trims available
- Colour change switch under diffuser for easy access
- The smart replacement for 2D and PL decorative fittings
- No lamp replacement
- 8M detection range on corridor dim option
- Emergency option
- Microwave and corridor dimming function option
- 3 year guarantee³
- IP54

NEW

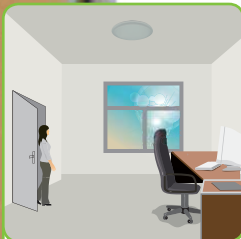
Supplied with white trim

Easy Fit trim options available

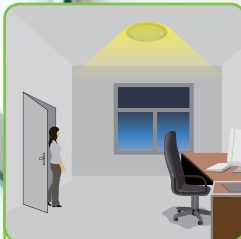


25W 55W Energy Saving 54%

Code	V	W	Temp	lm	Description	Hours
06810	240	25	3000/4000/5700K	2000	25W Deco Grande CCT Colour Change LED Bulkhead	50000
06811	240	25	3000/4000/5700K	2000	25W Deco Grande CCT Colour Change LED Bulkhead - Emergency	50000
06812	240	25	3000/4000/5700K	2000	25W Deco Grande CCT Colour Change LED Bulkhead - Corridor Dim	50000
06813	240	25	3000/4000/5700K	2000	25W Deco Grande CCT Colour Change LED Bulkhead - Emergency, Corridor Dim	50000
06816	-	-	-	-	Satin Nickel Trim Ring for 25W Deco Grande CCT Colour Change LED Bulkhead	-
06817	-	-	-	-	Chrome Trim Ring for 25W Deco Grande CCT Colour Change LED Bulkhead	-
06818	-	-	-	-	Copper Trim Ring for 25W Deco Grande CCT Colour Change LED Bulkhead	-
06819	-	-	-	-	Antique Brass Trim Ring for 25W Deco Grande CCT Colour Change LED Bulkhead	-



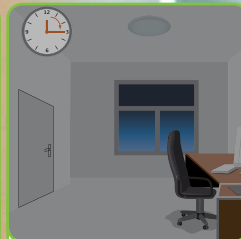
With sufficient natural light, the light does not switch on when presence is detected.



With insufficient natural light, the sensor switches on automatically when someone enters the room.



When the room is empty, light dims to stand-by level (10% / 20% / 30%) after the hold-time.



Light switched off automatically after the stand-by period has elapsed.

Tri-Level Control (Corridor Function)

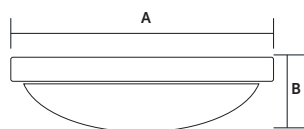
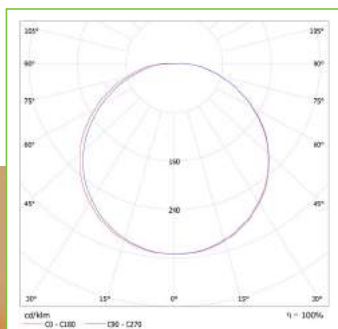
Offers 3 levels of light: 100%-dimmed light (10%, 20%, 30%)-off; and 2 periods of selectable waiting time: motion hold-time and stand-by period; selectable daylight threshold and choice of detection area.



Technical Specification

Data	
Construction	Polycarbonate
Driver	BELL
LED Chip	Samsung
IP Rating	IP54
Operating Temp	-20°C to +35°C
Input Voltage	220 - 240V
Power Factor	> 0.9
CRI	85 - Exceeds EU standard of Ra 80 for Colour Rendering Index
LMR	80 - Exceeds EU standard of 70 for Lumens Maintenance Ratio
L1A / L1B / L2A / L2B Compliant	Yes

06810 25W



Model	A Ø	B Depth
25W	390	94



¹ Exceeds EU standard of 70 for Lumens Maintenance Ratio
² Exceeds EU standard of RA 80 for Colour Rendering Index
³ Subject to terms & conditions (Contact Customer Service)