



Technical Data

Nexus Grid Dimmer Modules

Brief product description:

The Nexus Grid range is ideal for domestic, commercial and industrial applications, and allows you to build your own module configurations with a variety of combinations and finishes.

Features:

- Intelligent trailing edge dimmer module
- Adjust the lighting level to suit the mood and save power at lower lighting levels
- Soft start brings the lights to a set level in around 1 second and extends the life of lamps
- Smooth dimming control with silent operation - no noise when dimming
- Overload protection prevents failure if you mistakenly connect your dimmer to too many lights or transformers, and will turn the lights down or off until the load is corrected
- Support for lower wattage lamps eliminates flicker
- 2 way push on/off with rotary control
- Supplied with dimmer knob
- Suitable for for LED, Halogen, CFL and Incandescent lamps
- Simple secure 'locate & clip' fitting to frame
- Captive backed out terminal screws for fast installation
- Module to be installed with Grid frame and plate

Product Images



RDTR



RPCDWDTR



RPCDBDTR



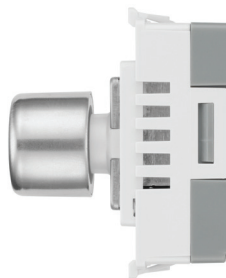
RBNDR



RBSDTR



RPCDTR



SIDE



REAR

Compatible
With dimmable
LED's and
CFL's-check instructions
for ratings
TRAILING EDGE
5-200VA
200-250V-50Hz
2 WAY PUSH
BS EN60669-2-1
CE UK CA
L2 L1

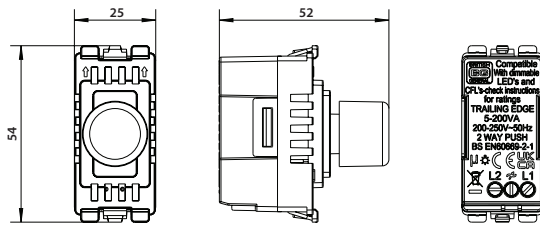


Nexus Grid Dimmer Modules

Technical Specifications

Standard(s)	BS EN 60669-2-1	
Voltage	200-250V AC	
Load Rating (Max/Min per module)		
Dimmable LED	5-100W	
Tungsten/Incandescent	5-200W	
Halogen	20-200W	
Dimmable Compact Fluorescent (CFL)	5-100W	
Type	Trailing Edge	
Terminal Capacity	4 x 1mm ² 4 x 1.5mm ² 2 x 2.5mm ² & 1 x 4.0mm ²	
RoHS Directive	Yes	
WEEE Directive	Yes	
Mounting Box Depth (Min)	25mm	

Line Diagrams



Packaging Information

Cat No.	Description	Packaging Type			Pack Quantity			Barcode		
		Product	Inner Box	Outer Box	Each	Inner Box	Outer Box	Individual	Inner Box	Outer Box
RDTR	2-Way Dimmer - WH	Bag	Colour Box	Carton	1	10	100	5050765202299	5050765202336	5050765202374
RPCDWDTR	2-Way Dimmer - EVWH	Bag	Colour Box	Carton	1	10	100	5050765233064	5050765233088	5050765233101
RPCDBDTR	2-Way Dimmer - EVBK	Bag	Colour Box	Carton	1	10	100	5050765233071	5050765233095	5050765233118
RBSDTR	2-Way Dimmer - BS	Bag	Colour Box	Carton	1	10	100	5050765202312	5050765202350	5050765202398
RPCDTR	2-Way Dimmer - PC	Bag	Colour Box	Carton	1	10	100	5050765202305	5050765202343	5050765202381
RBNDTR	2-Way Dimmer - BN	Bag	Colour Box	Carton	1	10	100	5050765202329	5050765202367	5050765202404

*WH = White; EVWH = Evolve White; EVBK = Evolve Black; BS = Brushed Steel; PC = Polished Chrome; BN = Black Nickel

Weights & Dimensions

Cat No.	Description	Dimensions (H x W x D) cm			Weight (kg)			CBM (m ³)
		Product	Inner Box	Outer Box	Each	Inner Box	Outer Box	Outer Box
RDTR / RPCD*DTR	2-Way 200W Trailing Edge	5.4 x 2.5 x 5.2	6.2 x 12.2 x 13.7	15.6 x 25.8 x 32	0.042	0.46	4.80	0.013201
R**DTR	2-Way 200W Trailing Edge	5.4 x 2.5 x 5.3	6.2 x 12.2 x 13.7	15.6 x 25.8 x 32	0.047	0.51	5.30	0.013201