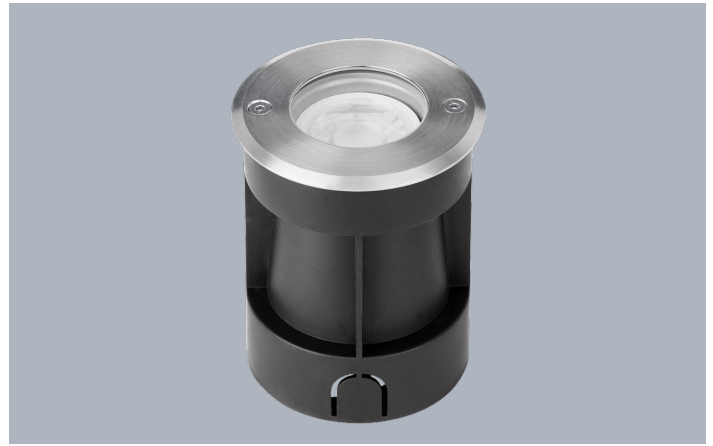


Product Description:

G-Lite™ is the Enlite range of 304 stainless steel ground walkover lights. Designed to be discreetly recessed, these ground lights can be used for pathways and patios making them perfect for domestic and commercial applications.

Product Image:

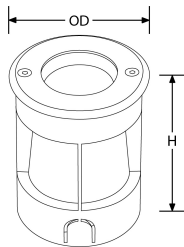


G-Lite™ 240V IP67 Stainless Steel GU10 Recessed Ground Light

Product Features:

- IP67 Mains voltage 304 stainless steel LED ground light
- Supplied with plastic mounting sleeve
- Pre-wired with 1 metre of rubber cable
- For use with GU10 lamps – lamps not included (Max 35W lamp)
- Cut-out 85mm without mounting sleeve. Cut-out 90mm with mounting sleeve
- Max. weight 2,000kg
- 3 year warranty

Line Drawing Image



Product Specs:

Luminaire Distribution	Direct	Input Voltage	100~240V AC
Dimmable	No	IP Rating	IP67
IK Rating	IK10	Operating Env. Temp. (Min) °C	-25
Operating Env. Temp. (Max) °C	45	Optic Material	Glass
Overall Diameter (mm)	100	Recess Depth (mm)	130
Cutout Diameter (mm)	85	Lamp Base	GU10
Height (mm)	130		

SKU Table and Ordering

SKU Code

EN-RGL1

Compliance & Approvals:



✓RoHS

IK10

Warranty

This product has a warranty period of 3 Years.

Warranties are valid from the date of purchase. The warranty is invalid in the case of improper use, installation, tampering, removal of the Q.C. date label or installation in an improper working environment or installation. Should this product fail during the warranty period it will be replaced free of charge, subject to the correct installation of the original product and subsequent return of the faulty unit. Aurora does not accept responsibility for any installation costs associated with the replacement of this product and Aurora reserves the right to alter specifications without prior notice.

UK Enlite Sales & Distribution
Apex Park
6 Little Burrow
Welwyn Garden City AL7 4SW
United Kingdom
Tel : +44 (0) 1707 35 18 20